



"65% of Working-Age Alaskans with a Postsecondary Credential by 2025"

**FOR IMMEDIATE RELEASE: 65% BY 2025 DASHBOARDS REVEALED**

The Alaska Postsecondary Access and Completion Network revealed the organization's new Alaska Postsecondary Education Attainment Metrics dashboard this month. This dashboard outlines key progress measures to support the 65% by 2025 goal.

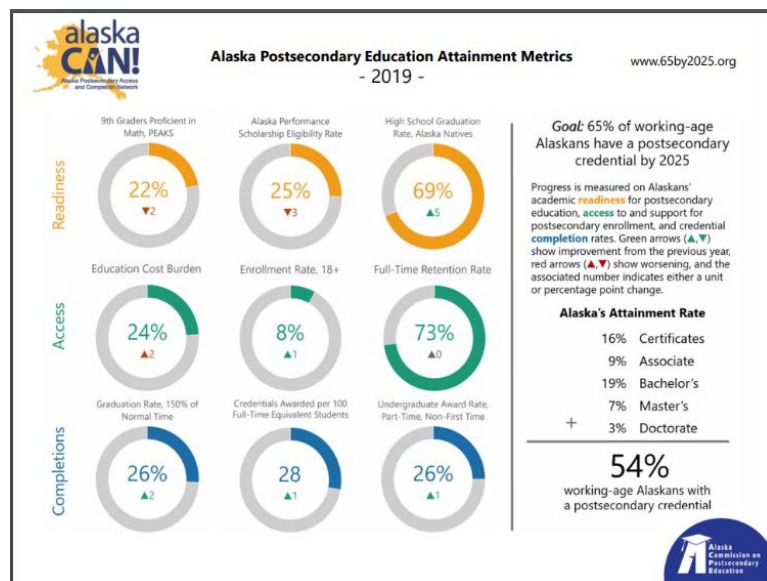
**Goal:** 65% of working-age Alaskans have a postsecondary credential by 2025.

The Alaska Department of Labor estimates that by 2025, 65 percent of top jobs in Alaska will require education or training beyond high school. With enrollment, retention and completion levels consistently rating among the lowest in the nation, immediate, focused action to improve postsecondary access and completion is critical. The Network, comprised of highly engaged stakeholders from school districts, state agencies, business, postsecondary institutions, nonprofits, native corporations and more, gathers around the goal of filling the state's economic and workforce needs through a commitment to improving Alaska's postsecondary access and completion rates. The Network aims to increase the percentage of the adult population with a postsecondary credential and/or degree from 54% to 65% by 2025.

The Network strives to reach this goal by creating synergy among service providers, supporting professional development, strengthening public messaging, and conducting and disseminating relevant research and data.

The new Alaska Postsecondary Education Attainment Metrics dashboard outlines measures of postsecondary educational readiness, access, and completion that bolster Alaska's attainment rates. Degree attainment rates are sourced from the US Census American Community Survey PUMS Microdata, and certificate attainment rates are based on the national proportion of the population with a certificate, adjusted to reflect Alaska's population.

Alaska still has a long way to go in reaching its 65% by 2025 goals, but this dashboard highlights specific areas that engaged partners and policymakers can address to help move Alaska in the right direction. The dashboard can be accessed on the Network's website at <http://65by2025.org/about/metrics/> and will be updated annually.



Please save the date and join the Network at the sixth annual Alaska Can! Conference on February 27-28, 2020. For more information visit <http://65by2025.org/>.